



TREM-1 Polyclonal Antibody

Catalog No	YP-Ab-13975
Isotype	IgG
Reactivity	Human;Rat;Mouse;
Applications	WB;IHC;IF;ELISA
Gene Name	TREM1
Protein Name	Triggering receptor expressed on myeloid cells 1
Immunogen	Synthesized peptide derived from TREM-1 . at AA range: 40-120
Specificity	TREM-1 Polyclonal Antibody detects endogenous levels of TREM-1 protein.
Formulation	Liquid in PBS containing 50% glycerol, 0.5% BSA and 0.02% sodium azide.
Source	Polyclonal, Rabbit,IgG
Purification	The antibody was affinity-purified from rabbit antiserum by affinity-chromatography using epitope-specific immunogen.
Dilution	WB 1:500-2000;IHC-p 1:100-500;IF/ICC 1:100-500;ELISA 1:5000-20000
Concentration	1 mg/ml
Purity	≥90%
Storage Stability	-20°C/1 year
Synonyms	TREM1; Triggering receptor expressed on myeloid cells 1; TREM-1; Triggering receptor expressed on monocytes 1; CD354
Observed Band	26kD
Cell Pathway	[Isoform 1]: Cell membrane ; Single-pass type I membrane protein . Recruited to lipid rafts when activated. .; [Isoform 2]: Secreted .
Tissue Specificity	Mostly expressed by immune cells of the myeloid lineage, such as monocytes, macrophages, neutrophils and dendritic cells (PubMed:10799849). Expression is associated with a mature stage of myeloid development (PubMed:11922939). Highly expressed in adult liver, lung and spleen than in corresponding fetal tissue. Also expressed in the lymph node, placenta, spinal cord and heart tissues. Isoform 2 was detected in the lung, liver and mature monocytes.
Function	function:Stimulates neutrophil and monocyte-mediated inflammatory responses. Triggers release of pro-inflammatory chemokines and cytokines, as well as increased surface expression of cell activation markers. Amplifier of inflammatory responses that are triggered by bacterial and fungal infections and is a crucial mediator of septic shock.,induction:Up-regulated by bacteria, fungi and lipopolysaccharides (LPS).,PTM:Glycosylated.,similarity:Contains 1 Ig-like V-type (immunoglobulin-like) domain.,subunit:Interacts with TYROBP/DAP12.,tissue specificity:Highly expressed in adult liver, lung and spleen than in corresponding fetal tissue. Also expressed in the lymph node, placenta, spinal cord and heart tissues. Expression is more elevated in peripheral blood leukocytes than in the bone marrow and in normal cells than malignant cells. Expressed at low levels in



the early development of the hema

Background

triggering receptor expressed on myeloid cells 1 (TREM1) Homo sapiens This gene encodes a receptor belonging to the Ig superfamily that is expressed on myeloid cells. This protein amplifies neutrophil and monocyte-mediated inflammatory responses triggered by bacterial and fungal infections by stimulating release of pro-inflammatory chemokines and cytokines, as well as increased surface expression of cell activation markers. Alternatively spliced transcript variants encoding different isoforms have been noted for this gene.[provided by RefSeq, Jun 2011],

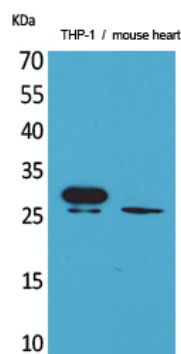
matters needing attention

Avoid repeated freezing and thawing!

Usage suggestions

This product can be used in immunological reaction related experiments. For more information, please consult technical personnel.

Products Images



Western Blot analysis of THP-1, mouse heart cells using TREM-1 Polyclonal Antibody. Secondary antibody(catalog#:RS0002) was diluted at 1:20000



Immunohistochemical analysis of paraffin-embedded human-brain, antibody was diluted at 1:100